

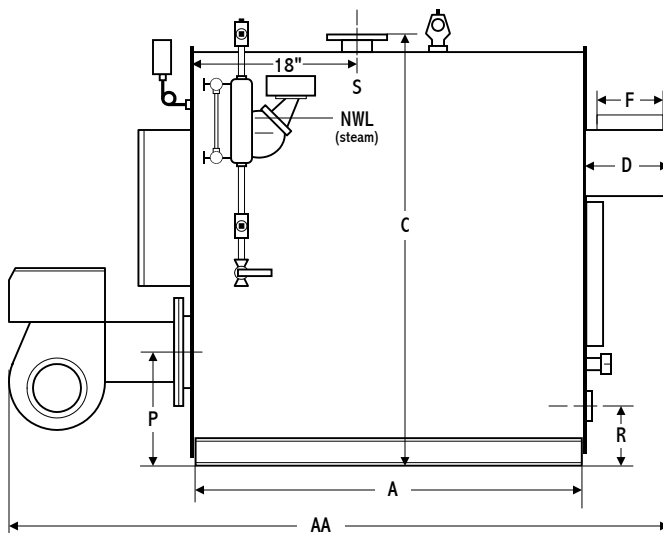
L.E.S. Series HF "Scotch Box" Boilers

3-Pass Firetube • 15# Steam / 30# Water • 83% Efficiency • 4 sq.ft. Waterside Heating Surface per BHP

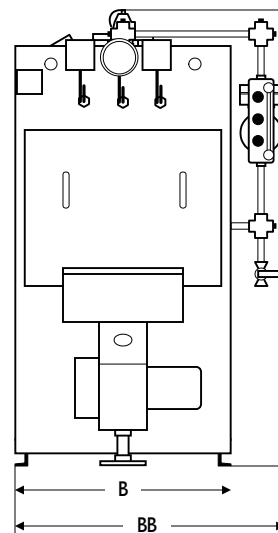
Series HF RATINGS // DATA // DIMENSIONS

Model: HF-	580	800	1000	1250	1500	1800	2070	2250	2650	2760	3000	3350	3680
Input													
Gas (MB/CF) CFH	695	960	1200	1505	1805	2165	2490	2710	3190	3325	3610	4035	4430
Oil (140MB/Gal) GPH	5.0	6.9	8.6	10.8	12.9	15.5	17.8	19.4	22.8	23.8	25.8	28.8	31.6
Output													
MBH	580	800	1000	1250	1500	1800	2070	2250	2650	2760	3000	3350	3680
Boiler Horsepower	17	24	30	37	45	54	62	67	79	82	90	100	110
Gas Burner Motor HP	0.3	0.3	0.3	0.3	0.5	0.5	1.0	1.0	2.0	2.0	3.0	3.0	3.0
Oil Burner Motor HP	0.3	0.3	0.5	0.8	1.0	1.0	1.5	1.5	2.0	2.0	3.0	3.0	5.0
Sq.Ft. Heating Surface													
Primary	16.7	20.8	20.6	24.7	28.7	35.6	40.4	40.4	46.6	46.6	46.5	51.9	51.8
Total Fireside	62	86	109	134	163	200	242	242	286	298	325	376	386
Total Waterside	68	94	120	148	180	221	267	267	316	329	360	417	428
Boiler Data													
Furnace Vol. (Cu.Ft.)	4.5	6.1	6.1	7.7	9.3	13.6	15.8	15.8	20.3	20.3	20.3	23.2	23.2
Water Cap. (Gal; NWL)	89	116	108	135	160	206	237	237	282	278	270	306	303
Water Cap. (Gal; Full)	112	146	139	173	206	275	318	318	363	359	350	398	395
Dry Weight (LBS)	1350	1650	1750	2100	2425	3000	3450	3450	3925	3975	4075	4550	4600
Dimensions in Inches													
A Skid Length	29	39	39	49	59	59	68	68	68	68	68	78	78
AA Overall Length	70	80	80	90	100	102	112	112	114	114	114	124	128
B Width	28	28	28	28	28	34	34	34	34	34	34	34	34
BB Trimmed Width (Std)	40	40	40	40	40	46	46	46	46	46	46	46	46
C Height	64	64	64	64	64	72	72	72	78	78	78	78	78
CC Trimmed Height	72	72	72	72	72	79	79	79	86	86	86	86	86
D Rear Smokebox Depth	10	10	10	10	10	14	14	14	16	16	16	16	16
F Flue Connection Size	6	8	8	8	8	10	10	10	12	12	12	12	12
Flue Connection Height	50	50	50	50	50	54	54	54	61	61	61	61	61
P Burner Port Height	18	18	18	18	18	20	20	20	20	20	20	20	20
Burner Port ID	9¼	9¼	9¼	9¼	9¼	12¼	12¼	12¼	14½	14½	14½	14½	14½
R Return Size (NPT)	2	2	3	3	3	4	4	4	4	4	4	4	4
Return Height	8½	8½	8½	8½	8½	10½	10½	10½	10½	10½	10½	10½	10½
S Supply Size (*=Flange)	3	3	4*	4*	4*	6*	6*	6*	6*	6*	6*	6*	8*
Supply Height	64	64	64	64	64	72	72	72	78	78	78	78	78

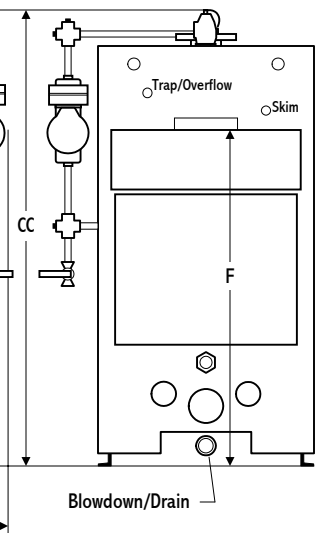
Side View



Front View



Rear View



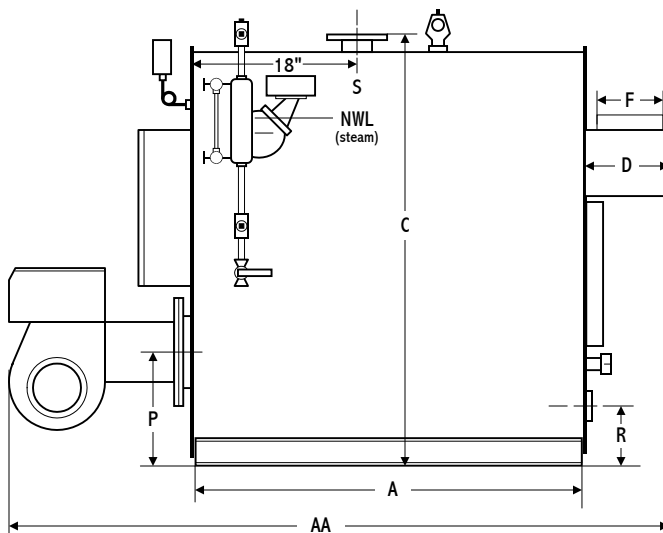
L.E.S. Series HF3 "Scotch Box" Boilers

3-Pass Firetube • 15# Steam / 30# Water • 83% Efficiency • 4 sq.ft. Fireside Heating Surface per BHP

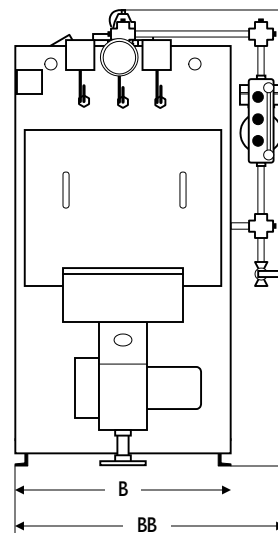
Series HF3 RATINGS // DATA // DIMENSIONS

Model: HF3-	15	20	25	30	40	50	60	70	80	90
Input										
Gas (MB/CF) CFH	600	800	1000	1200	1610	2010	2410	2820	3220	3620
Oil (140MB/Gal) GPH	4.3	5.7	7.1	8.6	11.5	14.4	17.2	20.1	23.0	25.9
Output										
MBH	500	670	835	1000	1340	1675	2010	2345	2680	3015
Boiler Horsepower	15	20	25	30	40	50	60	70	80	90
Gas Burner Motor HP	0.3	0.3	0.3	0.3	0.3	0.5	1.0	1.0	2.0	3.0
Oil Burner Motor HP	0.3	0.3	0.5	0.5	0.8	1.0	1.5	1.5	2.0	3.0
Sq.Ft. Heating Surface										
Primary	16.7	20.8	20.6	24.7	28.7	35.6	40.4	46.6	46.5	51.9
Total Fireside	62	86	102	125	163	200	242	286	325	359
Total Waterside	68	94	111	137	180	221	267	316	360	397
Boiler Data										
Furnace Vol. (Cu.Ft.)	4.5	6.1	6.1	7.7	9.3	13.6	15.8	20.3	20.3	23.2
Water Cap. (Gal; NWL)	89	116	111	138	160	206	237	282	270	312
Water Cap. (Gal; Full)	112	146	141	176	206	275	318	363	350	404
Dry Weight (LBS)	1350	1650	1725	2075	2425	3000	3450	3925	4075	4500
Dimensions in Inches										
A Skid Length	29	39	39	49	59	59	68	68	68	78
AA Overall Length	70	80	80	90	100	102	112	114	114	124
B Width	28	28	28	28	28	34	34	34	34	34
BB Trimmed Width (Std)	40	40	40	40	40	46	46	46	46	46
C Height	64	64	64	64	64	72	72	78	78	78
CC Trimmed Height	72	72	72	72	72	79	79	86	86	86
D Rear Smokebox Depth	10	10	10	10	10	14	14	16	16	16
F Flue Connection Size	6	8	8	8	8	10	10	12	12	12
Flue Connection Height	50	50	50	50	50	54	54	61	61	61
P Burner Port Height	18	18	18	18	18	20	20	20	20	20
Burner Port ID	9¼	9¼	9¼	9¼	9¼	12¼	12¼	14½	14½	14½
R Return Size (NPT)	2	2	3	3	3	4	4	4	4	4
Return Height	8½	8½	8½	8½	8½	10½	10½	10½	10½	10½
S Supply Size (*=Flange)	3	3	3	4*	4*	6*	6*	6*	6*	6*
Supply Height	64	64	64	64	64	72	72	78	78	78

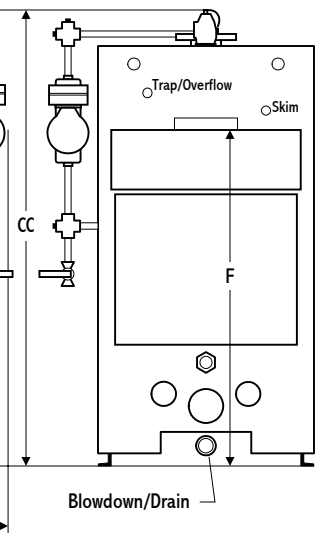
Side View



Front View



Rear View



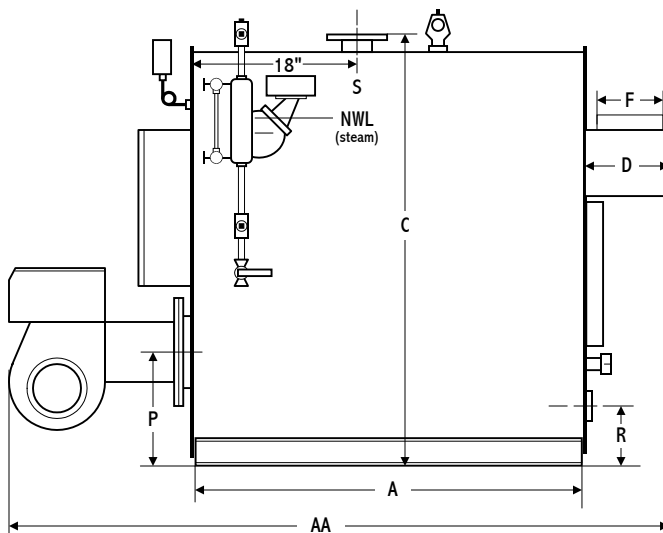
L.E.S. Series HF5 "Scotch Box" Boilers

3-Pass Firetube • 15# Steam / 30# Water • 83% Efficiency • 5 sq.ft. Fireside Heating Surface per BHP

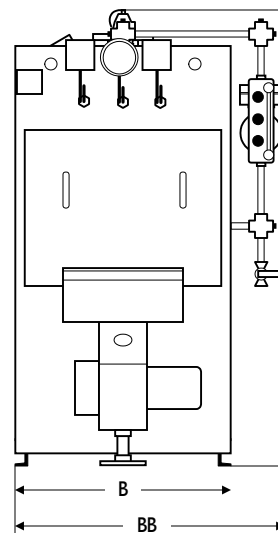
Series HF5 RATINGS // DATA // DIMENSIONS

Model: HF5-	12	16	20	25	32	40	50	60	65	75
Input										
Gas (MB/CF) CFH	480	645	800	1000	1290	1610	2010	2410	2610	3020
Oil (140MB/Gal) GPH	3.4	4.6	5.7	7.1	9.2	11.5	14.4	17.2	18.6	21.6
Output										
MBH	400	535	670	835	1070	1340	1675	2010	2175	2510
Boiler Horsepower	12	16	20	25	32	40	50	60	65	75
Gas Burner Motor HP	.25	.25	.33	.33	.33	.33	.5	1.0	1.0	1.0
Oil Burner Motor HP	.33	.33	.33	.5	.5	.75	1.0	1.5	1.5	1.5
SQ.FT. Heating Surface										
Primary	16.7	20.8	20.6	24.7	28.7	35.6	40.4	46.6	46.5	51.9
Total Fireside	62	86	102	125	163	200	251	298	325	376
Total Waterside	68	94	111	137	180	221	278	329	360	417
Boiler Data										
Furnace Vol. (CU.FT.)	4.5	6.1	6.1	7.7	9.3	13.6	15.8	20.3	20.3	23.2
Water Cap. (Gal; NWL)	89	116	111	138	160	206	325	278	270	306
Water Cap. (Gal; Full)	112	146	141	176	206	275	406	359	350	398
Dry Weight (LBS)	1350	1650	1725	2075	2425	3000	3500	3975	4075	4550
Dimensions in Inches										
A Skid Length	29	39	39	49	59	59	68	68	68	78
AA Overall Length	70	80	80	90	102	102	112	114	114	124
B Width	28	28	28	28	28	34	34	34	34	34
BB Trimmed Width (Std)	40	40	40	40	40	46	46	46	46	46
C Height	64	64	64	64	64	72	72	78	78	78
CC Trimmed Height	72	72	72	72	72	79	79	86	86	86
D Rear Smokebox Depth	10	10	10	10	10	14	14	16	16	16
F Flue Connection Size	6	8	8	8	8	10	10	12	12	12
Flue Connection Height	50	50	50	50	50	54	54	61	61	61
P Burner Port Height	18	18	18	18	18	20	20	20	20	20
Burner Port ID	9¼	9¼	9¼	9¼	9¼	12¼	12¼	14½	14½	14½
R Return Size (NPT)	2	2	3	3	3	4	4	4	4	4
Return Height	8½	8½	8½	8½	8½	10½	10½	10½	10½	10½
S Supply Size (*=Flange)	3	3	3	4*	4*	6*	6*	6*	6*	6*
Supply Height	64	64	64	64	64	72	72	78	78	78

Side View



Front View



Rear View

